



Fabric
INSPIRATION



ve ALWAYS
DEPEND
in the BUSINESS of
RANGERS
and...
London, 1840s



Create a themed meeting space
to inspire clients



Refresh a tired office
with an unconventional
statement piece



*Make a cosy area
where you can have a
private chat*

WE HELP
YOU SELL
with BEAUTIFUL
MARKETING
COLLATERAL

Branded literature stands
make your leaflets irresistible

nettl

Great for exhibitions
just rent a space only area





*A cabin in Cardiff, a beach in Birmingham, a ship in Salford!
Change the environment to suit the brand*



*Introduce informal seating
in communal areas around
the office*



*Accessorise booths
with matching seating cubes*



Create a cool lunch area and help people relax during their break time





the story so far...

1998

The Atrium Truck
Last tea stop for 1200 miles!



Accessorise booths
with matching furniture



Can I get you ANYTHING...
COFFEE?
TEA? Me?
ECOMMERCE?

(mof) Joan Casack, Working Girl



Lightweight, internal 'walls'
can be moved around to suit
office or event spaces




Personalise interior walls with key messages or inspirational quotes

Brand your walls with bespoke wallpaper

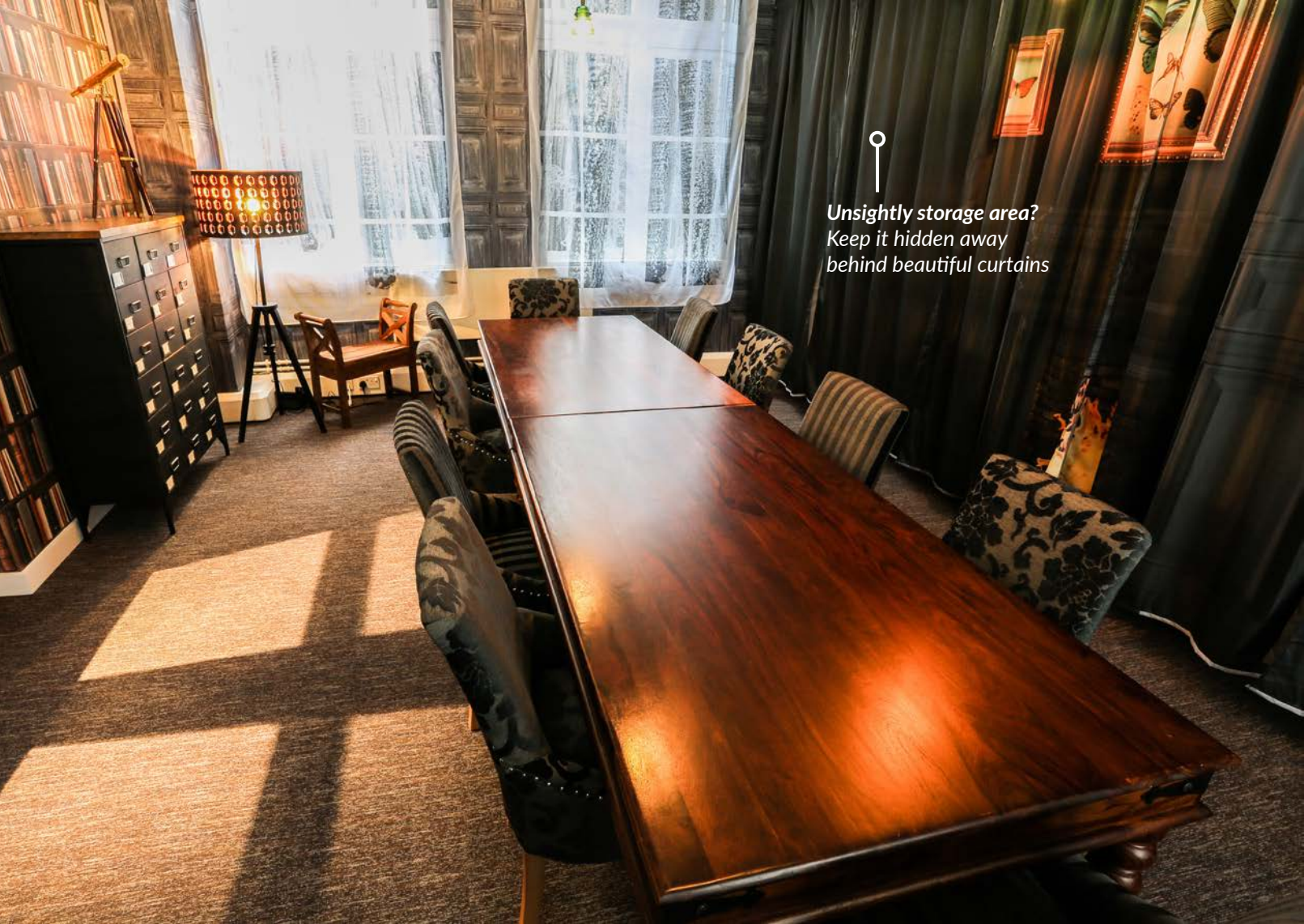
A quirky focal point stimulates creativity

Restyle an open plan office with free-standing displays




Add character to a room
with personalised curtains





Unsightly storage area?
*Keep it hidden away
behind beautiful curtains*



nettl
WEB JOURNEY
so far
and HOW can we HELP?

— A unique feature wall will make your brand stand out

Highlight key messages with a signage stand



Branded leaflet stands reinforce the message —



*Print a different image
on each side to increase
functionality*

*Don't go unnoticed
with bright backlit graphics*



○
*Surprise! Control what is visible
and what remains hidden in large rooms*



○
*Create corridors
and control traffic*



Create immersive spaces
where people want to be




Create layers of visual impact with multiple display stands

Decorate, inspire or communicate

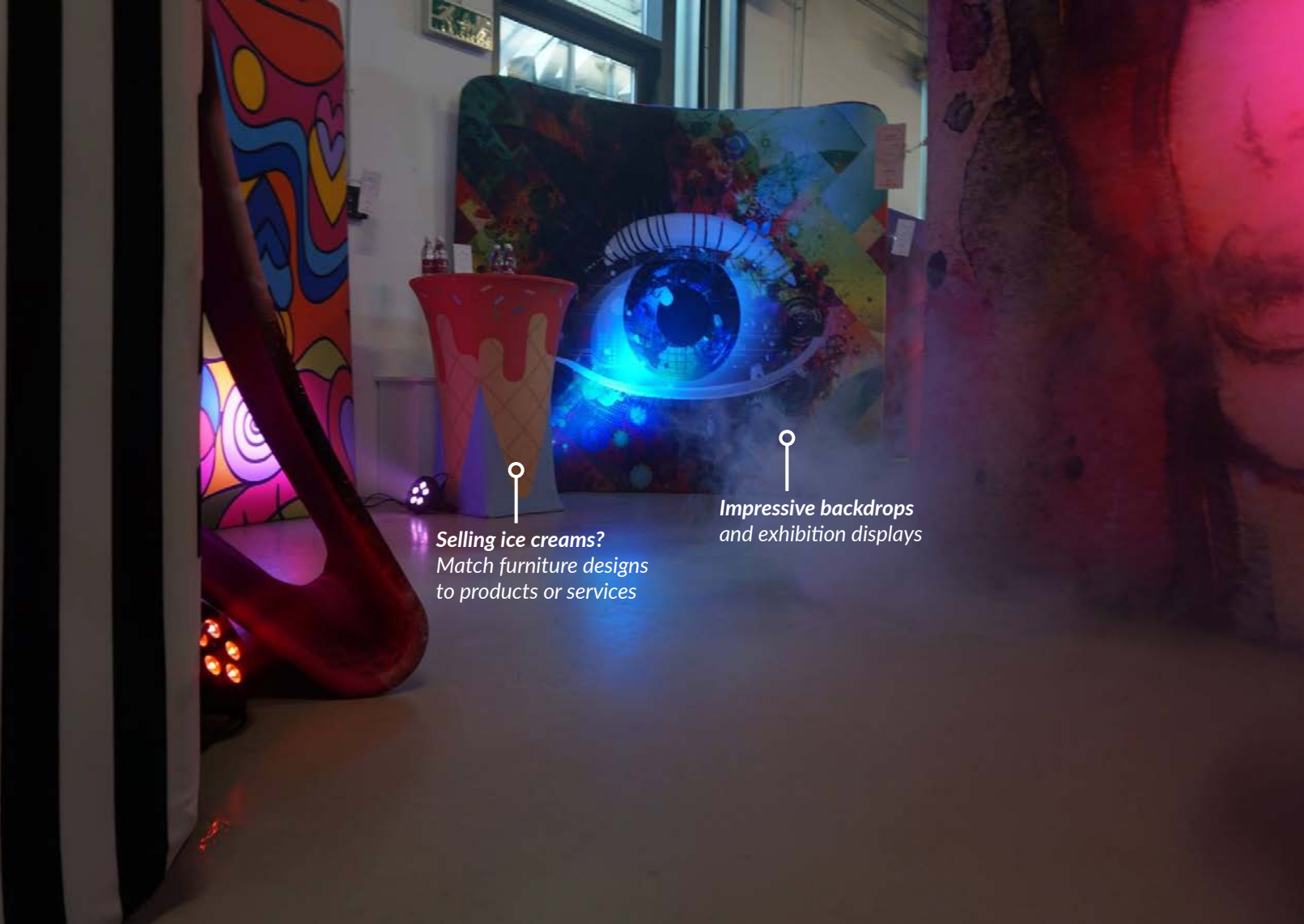
Define areas and direct traffic

Display art on the floor instead of on the walls



Bring the outside, inside
and achieve an urban look

So much more impressive
than hired trestle tables...



Selling ice creams?
Match furniture designs
to products or services

**Impressive backdrops
and exhibition displays**



#EXPOGANZA

#EXPOGANZA

📍
*Make your own 'selfie wall'
for a fun social media prop*



Co-ordinate your fabric expo kit





*Brand communal areas
for an impressive entrance
to your event*